



PROFESSIONAL SURVEYS

EPI Professional Services offer a range of surveys designed to target specific infrastructure areas.

Following each survey, a thorough report detailing the findings will be presented in full colour and in both hard and soft copy formats. These reports will also include recommendations tailored to the needs of the client.

The surveys are intended to highlight inefficiencies in both hardware and personnel and provide the client with the necessary tools to begin the improvement process.



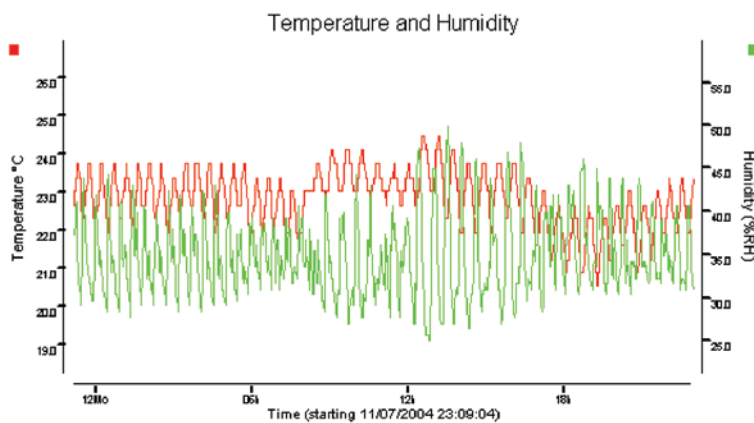
ENVIRONMENTAL SURVEY:

The environmental survey is designed to quantify the affecting variables within a designated space. The specific aspects under consideration are:-

- **Temperature**
- **Humidity**
- **Noise**
- **Lighting**
- **Vibration**
- **Air Flow**
- **Air Quality**



Using equipment recognised by the Data Centre industry allows EPI to build an accurate picture of the working environment. This information can then be used to tune the space to its optimum running conditions.



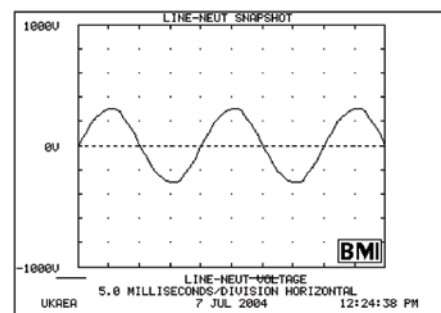
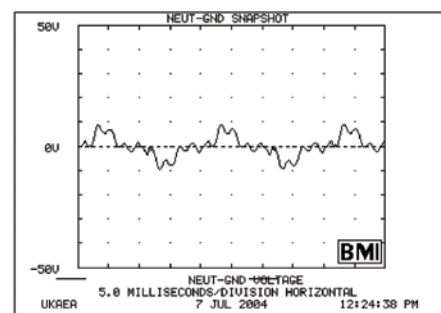
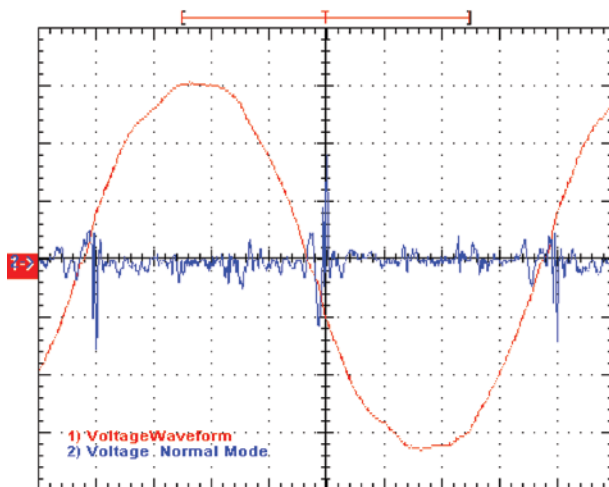
POWER SURVEY

The power survey is designed to investigate the electrical infrastructure within an IT environment. The specific aspects under consideration are:-

- **Equipotential bonding/earthing**
- **Setup of electrical systems**
- **Voltage**
- **Current**
- **Power factors**
- **Harmonics**



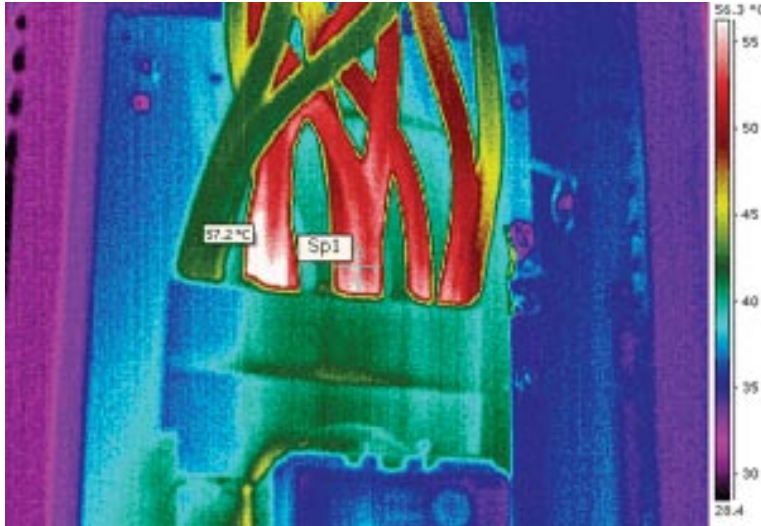
In addition to the standard three phase supplies, EPI also has the ability to monitor multi-core single phase supplies using non-intrusive methods. Typically a power analyser will log the characteristics of the electrical supply over an extended period of time to ensure all significant data is captured.





THERMAL IMAGING

Over a period of time, surges in current can lead to connections within switch gear working themselves loose. This is very difficult to detect with the naked eye and so often goes unnoticed. These bad connections can lead to loss of connectivity, overheating, fires and ultimately power outages.



EPI use specialised non-intrusive cameras to detect any hotspots within switch gear. This highlights any potential problems before they become disasters. If necessary, EPI qualified electricians can be called upon to rectify any anomalies.

EPI UK	Witan Park, Avenue 2 Station Lane, Witney, Oxfordshire, OX28 4FH. UK Tel: +44 (0) 1993 708855 Fax: +44 (0) 1993 708850 Email: sales@epi-uk.com Web: www.epi-uk.com
EPI (Iberia) Ltd	Suite 10, 123 Main Street. Gibraltar. Tel: +350 43226 Spanish Mobile: +34 671 623 580 Email: sales@epi-iberia.com Web: www.epi-iberia.com
EPI Singapore	37th Floor, Singapore Land Tower, 50 Raffles Place, Singapore. 048623 Tel: +65 6733 5900 Fax: +65 6735 6400 Email: sales@epi-ap.com Web: www.epi-ap.com
EPI France	30 avenue de l'Amiral Lemonnier, 78160 Marly le Roi. France Tel: +33 (0)1 3917-1557 Fax: +33 (0)1 3917-1558 Email: sales@epi-fr.com Web: www.epi-fr.com